

⚠ WARNING
 DO NOT EXCEED WORKING LOAD LIMIT.
 USE ONLY G80 & G100 COMPATIBLE COMPONENTS FOR OVERHEAD LIFTING.



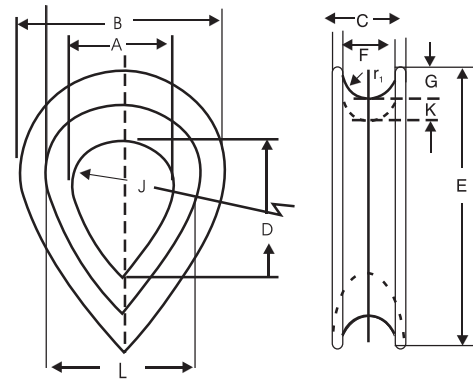
Thimble for Wire Ropes

ORDINARY THIMBLE

Nominal Size of Rope	A	B	*C Min	D	E	*F Min	G	r1	J Approx	K	L
08	22	38	13	34	54	09	04	3.5	62	04	30
10	24	46	15	38	64	11	06	5.5	76	05	34
12	32	60	19	44	80	13	08	7.5	90	06	44
14	32	60	21	44	80	15	08	7.5	90	06	44
16	40	72	23	58	98	17	08	7.5	114	08	56
18	44	80	29	66	110	19	10	9.5	125	08	60
20	50	94	31	74	124	21	12	11.0	150	10	70
22	58	102	34	82	134	24	12	11.0	165	10	78
24	64	108	36	92	150	26	12	11.0	176	10	84
25	70	118	37	108	162	27	14	13.0	200	10	90
29	76	132	41	112	176	31	16	14.5	230	12	100
32	96	152	44	134	196	34	16	14.5	250	12	120
35	104	174	48	152	228	38	19	17.5	300	16	136
38	114	198	54	165	254	41	24	22.0	330	18	150
41	114	198	56	165	254	44	4	22.0	330	18	150
44	125	222	57	178	285	47	26	23.5	355	25	175
48	134	246	67	190	315	51	28	25.5	380	28	190
51	140	256	70	330	330	55	30	27.5	400	28	196
54	140	256	70	200	330	58	30	27.5	400	28	196
57	146	270	76	216	355	61	32	29.5	425	30	206
64	156	308	95	240	400	69	44	41.0	450	32	220
70	200	400	120	275	500	75	60	57.0	480	40	280



SL-411



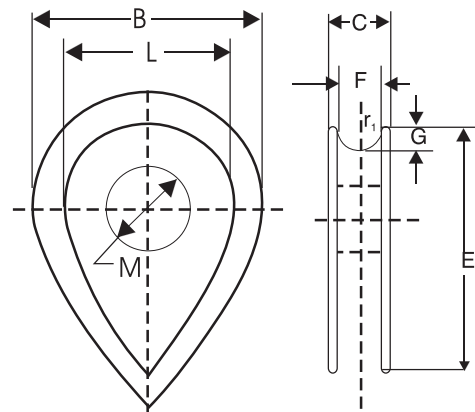
Specifications given are indicative and are subject to change.
 Note : For wire ropes of intermediate size, the next larger size of thimble shall be used.
 These dimension are minimum for thimbles of nominal size up to and including 41 only

SOLID THIMBLE

Nominal Size of Rope	B	C	E	F Min	G	r1	L	*M Max
08	33	11	46	9	4	3.5	25	12
10	44	15	56	11	6	5.5	32	16
12	60	20	82	13	8	7.5	44	22
14	60	21	82	15	8	7.5	44	22
16	70	23	94	17	10	29.5	50	25
18	80	26	104	19	12	11.0	56	28
20	88	28	116	21	12	11.0	64	32
22	100	30	125	24	14	13.0	72	34
24	104	33	140	26	14	13.0	76	38
25	114	36	150	27	16	14.5	82	42
29	124	39	165	31	18	16.5	88	44
32	140	45	190	34	20	18.5	100	50
35	154	50	208	38	20	18.5	114	56
38	169	56	234	41	22	20.5	125	64
41	169	56	234	44	22	20.5	125	64
44	190	65	260	47	25	22.5	140	68
48	206	67	275	51	28	25.5	150	75
51	229	72	300	55	32	29.5	165	78
54	229	76	300	58	32	29.5	165	78
57	243	78	330	61	34	31.5	115	88
64	276	88	375	69	38	35.5	200	100



SL-412



Specifications given are indicative and are subject to change.
 Note : For wire ropes of intermediate sizes, the next larger size of thimble shall be used.
 Dimension M is the standard pin hole and the largest pin-hole for each thimble. Should a smaller pin-hole be required the diameter of this shall be stated in the enquiry and order.

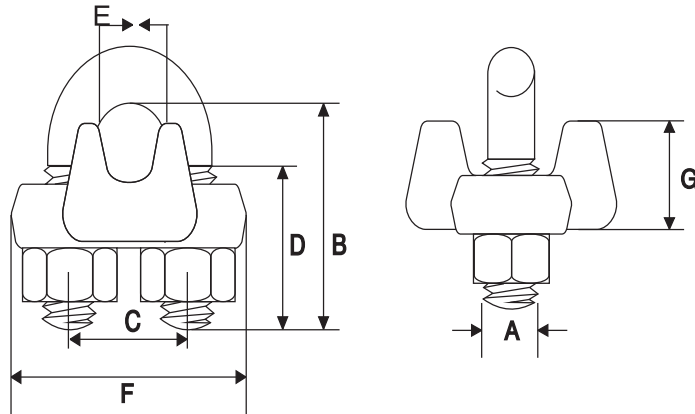
WARNING
DO NOT EXCEED WORKING LOAD LIMIT.
USE ONLY G80 & G100 COMPATIBLE COMPONENTS FOR OVERHEAD LIFTING.



Bull Dog Grips IS: 2361 / 1970



SL-449



Nominal Size (Dia. of Rope) d	A	B (3A+2d)	C (E+A)	D (2A+0.6d)	E (1.075d)	F (C+2A)	G (A)	H (2.3A)	J (Approx A)
8	M8	40	17	21	9	33	8	18	14
9	M10	50	21	26	11	41	10	23	18
10	M10	50	21	26	11	41	10	23	18
11	M12	60	25	31	13	49	12	28	22
12	M12	60	25	31	13	49	12	28	22
13	M12	64	27	32	15	51	12	28	22
14	M12	64	27	32	15	51	12	28	22
16	M14	74	31	38	17	59	14	32	25
18	M14	82	36	40	22	64	14	32	25
19	M14	82	36	40	22	64	14	32	25
20	M14	82	36	40	22	64	14	32	25
22	M16	92	40	45	24	72	16	37	29
24	M20	110	47	55	27	87	20	46	36
26	M20	118	51	57	31	91	20	46	36
28	M20	118	51	57	31	91	20	46	36
32	M20	124	54	59	34	94	20	46	36
35	M22	136	60	65	38	104	22	51	40
36	M22	142	63	67	41	107	22	51	40
38	M22	142	63	67	41	107	22	51	40
41	M25	157	69	75	44	119	25	58	45

Specifications given are indicative and are subject to change.

Note: For intermediate sizes of wire ropes, the next larger size of bull dog grip shall be used.

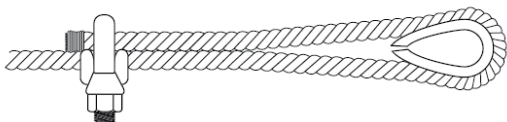


Figure 1



Figure 2

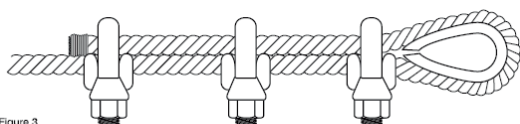


Figure 3

1. Refer to back table in following these instructions. Turn back specified amount of rope from thimble or loop. Apply first clip one base width from dead end of rope. Apply U-Bolt over dead end of wire rope - live end rests in saddle (Never Saddle a dead horse!). Tighten nuts evenly, alternate from one nut to the other until reaching the recommended torque.

2. When two clips are required, apply the second clip as near the loop or thimble as possible. Tighten nuts evenly, alternating until reaching the recommended torque. When more than two clips are required, apply the second clip as near the loop or thimble as possible, turn nuts on second clip firmly, but do not tighten. Proceed to Step 3.

3. When three or more clips are required space additional clips evenly between first two - take up rope slack-tighten nuts on each U-Bolt evenly, alternating from one nut to the other until reaching recommended torque.

⚠ WARNING
 DO NOT EXCEED WORKING LOAD LIMIT.
 USE ONLY G80 & G100 COMPATIBLE COMPONENTS FOR OVERHEAD LIFTING.



US Type Forged Wire Rope Clamp

FF-C-450 TYPE 1 CLASS1

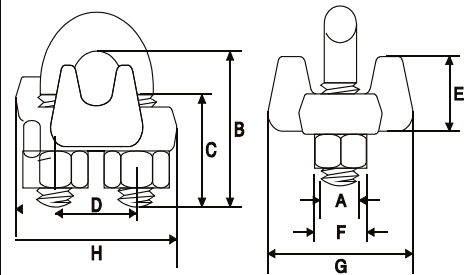


SL-450

- Each clamps has a product Identification Code for Material traceability, "SL", and a size forged into it.
- Entire Clamps are galvanized / Powder Coated to resist corrosive and rusting action.
- Only Genuine SL Clamps have a Red colour for instant recognition.
- All Clamps have rolled threads and extra heavy nuts.

Rope Size		Dimensions (mm)								Min No. of Clamps	Amt. of Rope to Turn Back in (cm)
(in.)	(mm)	A	B	C	D	E	F	G	H		
3/8	9-10	11.2	38.1	19.1	25.4	23.1	19.2	41.4	49.3	2	16.5
1/2	13	12.7	47.8	25.4	30.2	28.7	22.4	48.5	58.0	3	29.2
5/8	16	14.2	60.5	31.8	33.3	34.0	23.9	52.5	63.5	3	30.5
3/4	18-20	15.8	70.0	36.6	38.1	35.8	26.9	57.0	72.0	4	46
7/8	22	19.1	79.5	41.2	44.5	40.4	31.8	62.0	80.5	4	48
1	24-26	19.1	89.0	46.0	47.8	45.2	31.8	67.0	88.0	5	66
1 1/8	28-30	19.1	98.5	51.0	51.0	48.5	31.8	71.5	91.0	6	86
1 1/4	32-34	22.4	108	54.0	58.5	55.5	36.6	79.5	105	7	112
1 3/8	36	22.4	118	58.5	60.5	58.5	36.6	79.5	106	7	112
1 1/2	38-40	22.4	125	60.5	65.5	62.0	36.6	86.5	113	8	137
1 3/4	44-46	28.7	146	70.0	77.5	74.5	46.0	97.0	134	8	155
2	48-52	31.8	164	76.0	86.0	83.5	51.0	113	149	8	180

Specifications given are indicative and are subject to change.

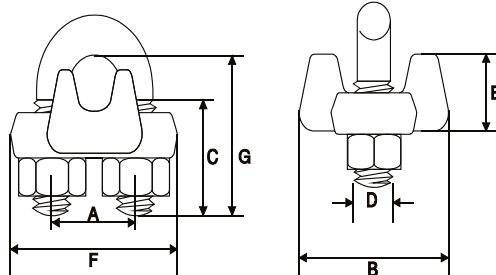


US Type Malleable Wire Rope Clamp

FF-C-450 TYPE 1 CLASS2



SL-451



Size	Dimensions(Inches)						
in	D	G	C	A	E	B	F
1/8	1/4	13/16	1/2	1/2	7/16	1/2	15/16
3/16	1/4	31/32	5/8	9/16	1/2	9/16	1 1/16
1/4	5/16	17/32	7/8	11/16	5/8	11/16	1 3/8
5/16	5/16	17/32	7/8	11/16	11/16	11/16	1 3/8
3/8	3/8	15/8	1	7/8	13/16	7/8	1 5/8
7/16	3/8	15/8	1	7/8	13/16	15/16	1 5/8
1/2	7/16	2	1 1/4	1	1 1/16	1	1 7/8
9/16	1/2	2 5/16	1 15/32	1 3/16	1 3/16	1 1/8	2 3/16
5/8	1/2	2 5/16	1 15/32	1 5/16	1 5/16	1 1/8	2 3/16
3/4	9/16	2 9/16	1 3/4	1 1/2	1 1/2	1 1/4	2 7/16
7/8	5/8	3 1/16	1 13/16	1 3/4	1 3/4	1 3/4	2 7/8
1	5/8	3 3/8	2 1/16	1 15/16	1 15/16	2	3
1 1/8	3/4	3 7/8	2 3/16	2 3/16	2 3/16	2 1/8	3 7/16
1 1/4	3/4	3 7/8	2 3/16	2 3/8	2 3/8	2 1/2	3 7/16
1 3/8	7/8	4 1/2	2	2 7/8	2 7/8	3 1/8	4 3/16
1 1/2	7/8	4 1/2	2	3	3	3 1/4	4 1/4

Specifications given are indicative and are subject to change.

⚠ WARNING
DO NOT EXCEED WORKING LOAD LIMIT.
USE ONLY G80 & G100 COMPATIBLE COMPONENTS FOR OVERHEAD LIFTING.



Open Spelter Socket



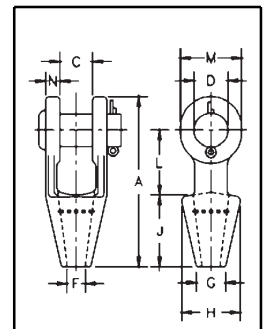
SL-416

Open Grooved Sockets meet the performance requirements of Federal Specification RR-S-550D, Type A, except for those provisions required of the contractor.

Rope Dia. (mm) *	Structural Strand Dia. (mm)		Weight Each (kg)	Dimensions (mm)										
				A	C	D	F	G	H	J	L	M	N	
6-7	-		.50	116	19.1	17.5	9.65	17.5	39.6	57.0	39.6	33.3	9.10	
8-10	-		.59	123	20.6	20.6	12.7	20.6	42.9	57.0	44.5	38.1	11.2	
11-13	-		1.02	141	25.4	25.4	14.2	23.9	47.8	63.5	51.0	47.8	12.7	
14-16	12-13		1.63	171	31.8	30.2	17.5	28.7	57.0	76.0	63.5	57.0	14.2	
18	14-16		2.64	202	38.1	35.1	20.6	31.8	66.5	89.0	76.0	66.5	15.7	
20-22	18-19		4.38	235	44.5	41.4	23.9	38.1	82.5	102	89.0	79.5	20.3	
24-26	20-22		7.03	268	51.0	51.0	28.7	44.5	95.5	114	102	95.5	22.4	
28-30	24-26		9.75	300	57.0	57.0	31.8	51.0	105	127	117	105	25.4	
32-36	28		14.1	335	63.5	63.5	38.1	57.0	121	140	127	121	28.7	
38	30-32		21.4	384	76.0	70.0	41.4	70.0	133	152	152	137	30.2	
* 40-42	33-35		24.9	413	76.0	76.0	44.5	76.0	140	165	165	146	33.3	
* 44-48	36-40		37.2	464	89.0	89.0	51.0	79.5	162	191	178	165	39.6	
* 50-54	42-45		59	546	102	95.5	57.0	95.5	187	216	229	178	46.0	
* 56-60	46-48		76	597	114	108	63.5	102	210	229	254	197	54.0	
* 64-67	50-54		114	648	127	121	73.0	114	235	248	274	216	60.5	
* 70-73	56-62		143	692	133	127	79.0	124	267	279	279	229	73.0	
* 75-80	64-67		172	737	146	133	86.0	133	282	305	287	241	76.0	
* 82-86	70-73		197	784	159	140	92.0	146	302	330	300	254	79.0	
* 88-92	76-80		255	845	171	152	98.5	165	314	356	318	274	82.5	
* 94-102	-		355	921	191	178	108	184	346	381	343	318	89.0	

* Cast Alloy Steel.

Specifications given are indicative and are subject to change.



Closed Spelter Socket



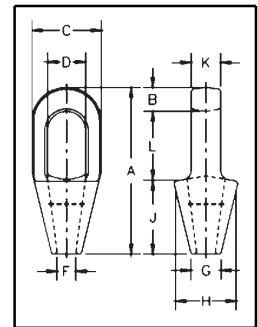
SL-417

Closed grooved Sockets meet the performance requirements of Federal Specification RR-S-550D, Type B, except for those provisions required of the contractor.

Rope Dia. (mm) †	Structural Strand Dia. (mm)		Weight Each (kg)	Dimensions (mm)										
				A	B	C	D*	F	G	H	J	K	L	
6-7	-		.23	116	12.7	39.6	22.4	9.65	17.5	39.6	57.2	12.7	46.0	
8-10	-		.34	125	15.8	42.9	24.6	12.7	20.6	42.9	57.2	17.5	52.5	
11-13	-		.68	140	17.5	51.0	29.5	14.2	23.9	51.0	63.5	22.4	58.5	
14-16	12-13		1.13	162	20.6	67.0	35.8	17.5	30.2	67.0	76.2	25.4	65.0	
18	14-16		1.92	194	26.9	76.2	42.2	20.6	33.3	70.0	89.0	31.8	77.5	
20-22	18-19		3.28	226	33.3	92.0	48.7	24.6	38.1	82.5	102	38.1	90.5	
24-26	20-22		4.76	254	36.6	105	58.5	28.7	44.5	95.5	114	44.5	103	
28-30	24-26		6.46	283	39.6	114	65.0	31.8	51.0	105	127	51.0	116	
32-35	28		8.95	309	41.4	128	71.0	38.1	58.5	119	138	56.5	129	
38	30-32		13.24	356	49.3	137	81.0	41.4	70.5	132	151	62.5	155	
† 40-42	33-35		16.32	390	54.0	146	82.5	44.5	76.2	140	165	70.0	171	
† 44-48	36-40		25.96	445	55.5	171	95.5	51.0	79.5	162	191	76.2	198	
† 50-54	42-45		35.83	502	62.0	194	111	57.2	95.5	187	216	82.5	224	
† 56-60	46-48		47.62	556	73.0	216	127	63.5	102	210	229	92.0	254	
† 64-67	50-54		63.50	597	79.5	241	140	74.5	114	235	248	102	270	
† 70-73	56-62		99.79	645	79.5	273	159	79.5	124	259	279	124	286	
† 75-80	64-67		125	686	82.5	292	171	86.0	133	292	305	133	298	
† 82-86	70-73		142	743	102	311	184	92.0	146	311	330	146	311	
† 88-92	76-80		181	787	102	330	197	98.5	165	330	356	159	330	
† 94-102	-		246	845	108	362	216	108	184	362	381	178	356	

† Cast Alloy Steel.

Specifications given are indicative and are subject to change.



WARNING

DO NOT EXCEED WORKING LOAD LIMIT.

USE ONLY G80 & G100 COMPATIBLE COMPONENTS FOR OVERHEAD LIFTING.



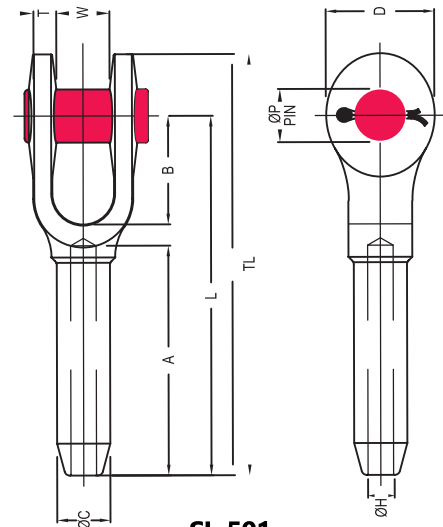
Open Swage Socket

for wire ϕ		Dimensions (mm)										Weight (kgs)
(mm)	(inch)	ϕC	ϕH	ϕP	B	TL	A	L	T	W	D	
6	1/4	12.7	6.85	17.5	38	121	54	102	8	17	35	0.25
8	5/16	19.6	8.65	20.6	44	159	81	135	10	21	41	0.5
10	3/8	19.6	10.4	20.6	44	159	81	135	10	21	41	0.5
11	7/16	24.9	12.2	25.4	51	198	108	169	13	25	51	1.1
13	1/2	24.9	14	25.4	51	198	108	169	13	25	51	1.1
14	9/16	31.8	15.5	30.2	57	243	135	206	16	32	63	2.1
16	5/8	31.8	17	30.2	57	243	135	206	16	32	63	2.1
19	3/4	39.4	20.3	35.1	70	297	162	254	19	38	76	3.6
22	7/8	43.2	23.9	41.1	83	346	189	295	23	44	86	5.3
25	1	50.5	26.9	51	95	397	216	340	26	51	102	8.1
29	1 1/8	57	30.2	57	108	444	243	381	30	57	114	13.5
32	1 1/4	64.5	33.8	63.5	121	494	270	419	30	63	127	16.4
35	1 3/8	71	36.8	63.5	133	540	297	460	33	63	133	21.4
38	1 1/2	78	40.1	70	146	591	324	502	37	76	146	29.5
44	1 3/4	86	47.2	89	171	689	378	584	43	89	178	42.2
51	2	100	53.5	95.5	203	798	432	679	46	102	203	65.8
57	2 1/4	113	59.9	108	171	835	486	705	65	114	222	93.5
63	2 1/2	125.2	67.5	108	171	879	498	749	65	114	222	103
76	3	150.6	80.4	133.4	219	1045	603	905	76	146	241	181.5

Swage sockets are recommended for use on 6x19 or 6x37 IWRC regular lay ropes and also satisfactory on galvanized bridge rope. They are **not recommended** for use on fiber core ropes.

Before using swage sockets with other type lay, construction or grade of wire rope, it is recommended that the termination be proofloaded to prove the adequacy of the assembly.

Sockets properly applied have an efficiency rating of 100% based on the catalog strength of the used wire rope.



SL-501

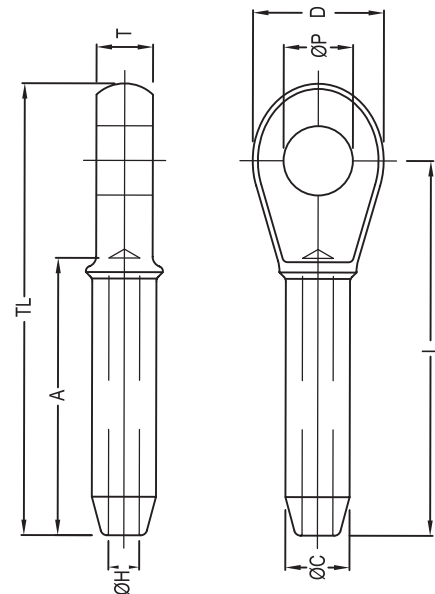
Closed Swage Socket

for wire ϕ		Dimensions (mm)								Weight (kgs)
(mm)	(inch)	ϕC	ϕH	D	ϕP	T	A	TL	L	
6	1/4	12.7	6.85	37	19.1	13	54	111	89	0.15
8	5/16	19.6	8.65	43	22.4	17	81	140	114	0.36
10	3/8	19.6	10.4	43	22.4	17	81	140	114	0.35
11	7/16	24.9	12.2	51	26.9	22	108	176	146	0.7
13	1/2	24.9	14	51	26.9	22	108	176	146	0.7
14	9/16	31.8	15.5	63	31.8	29	135	222	184	1.3
16	5/8	31.8	17	63	31.8	29	135	222	184	1.3
19	3/4	39.4	20.3	76	36.6	33	162	264	219	2.3
22	7/8	43.2	23.9	89	42.9	38	189	308	257	3.4
25	1	50.5	26.9	102	52.5	44	216	349	292	5.1
29	1 1/8	57	30.2	114	58.5	51	243	387	324	7.2
32	1 1/4	64.5	33.8	127	65	57	270	438	365	10.5
35	1 3/8	71	36.8	133	65	57	297	479	400	14.1
38	1 1/2	78	40.1	140	71.5	63	324	518	432	17.7
44	1 3/4	86	47.2	171	90.5	76	378	610	508	23.6
51	2	100	53.5	197	96.5	83	432	698	584	40.8
57	2 1/4	113	59.9	219	109.5	102	486	756	632	55.4
63	2 1/2	125.2	67.5	219	109.5	102	498	791	667	64.4
76	3	150.6	80.4	235	134.9	137	603	959	816	114.3

Swage sockets are recommended for use on 6x19 or 6x37 IWRC regular lay ropes and also satisfactory on galvanized bridge rope. They are **not recommended** for use on fiber core ropes.

Before using swage sockets with other type lay, construction or grade of wire rope, it is recommended that the termination be proofloaded to prove the adequacy of the assembly.

Sockets properly applied have an efficiency rating of 100% based on the catalog strength of the used wire rope.

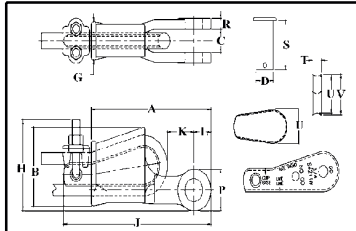


SL-502

⚠ WARNING
 DO NOT EXCEED WORKING LOAD LIMIT.
 USE ONLY G80 & G100 COMPATIBLE COMPONENTS FOR OVERHEAD LIFTING.



Wedge Socket



Wedge sockets meet the performance requirements of Federal Specification RR-S-550D, Type C, except those provisions required of the contractor.



SL-421

Wire Rope Dia. (mm.)	Weight Each (kg.)	Wedge Only Weight Each (kg.)	Dimensions (mm)														
			A	B	C	D	G	H	J†	K†	L	P	R	S	T	U	V
9-10	1.44	.23	143	70.5	20.6	20.6	35.1	79.0	187	40.6	22.4	39.6	11.2	54.1	11.2	31.8	35.1
11-13	2.79	.48	173	90.0	25.4	25.4	41.1	98.0	222	30.7	26.9	49.3	12.7	62.0	13.5	44.5	47.8
14-16	4.40	.81	207	111	31.8	30.2	54.0	116	263	41.7	31.0	57.0	14.2	79.5	17.5	51.0	55.5
18-19	6.58	1.18	248	122	38.1	35.1	62.0	136	306	55.0	35.6	66.5	16.8	92.2	19.8	59.5	65.0
20-22	9.75	1.82	283	118	44.5	41.4	68.5	160	356	56.5	42.2	79.0	19.1	106	22.4	68.5	74.5
24-26	13.9	2.44	324	129	51.0	51.0	65.0	178	403	69.0	51.0	95.5	22.4	118	26.2	73.0	83.5
28	20.5	3.56	365	140	57.0	57.0	84.0	197	450	63.5	57.0	108	25.4	137	30.2	79.5	90.5
30-32	26.1	3.09	406	202	63.5	63.5	90.5	N/A	N/A	86.0	63.5	121	28.4	148	33.3	86.0	97.0

NOTE: For intermediate wire rope sizes, use next larger size socket.

Specifications given are indicative and are subject to change.

Resin for Spelter Sockets

Note: For use on 416 & 417 Spelter socket only.

- 100% termination efficiency.
- Temperature operating range is -54° C to +115° C.
- Ideal for on site applications.
- No hazardous molten metal.
- Improved fatigue life.
- Pouring temperature without booster pack is 9° C to 43° C.
- One booster pack if pouring temperature is 0° C to 9° C.
- Two booster packs if pouring temperature is -10° C to 0° C.
- Refer to WIRELOCK® Technical Manual for more information.



Guide to amount of WIRELOCK® Required



Wire Rope Size	WIRELOCK® Required (cc)	Wire Rope Size	WIRELOCK® Required (cc)
6-7	9	44	700
8	17	48	700
9-10	17	51	1265
11	35	54	1265
13	35	56	1410
14	52	60	1410
16	52	64	1830
20	86	67	1830
22	125	70	2250
26	160	76	3160
28	210	82	3795
32	350	88	4920
36	350	94	5980
40	420	102	7730
42	495		