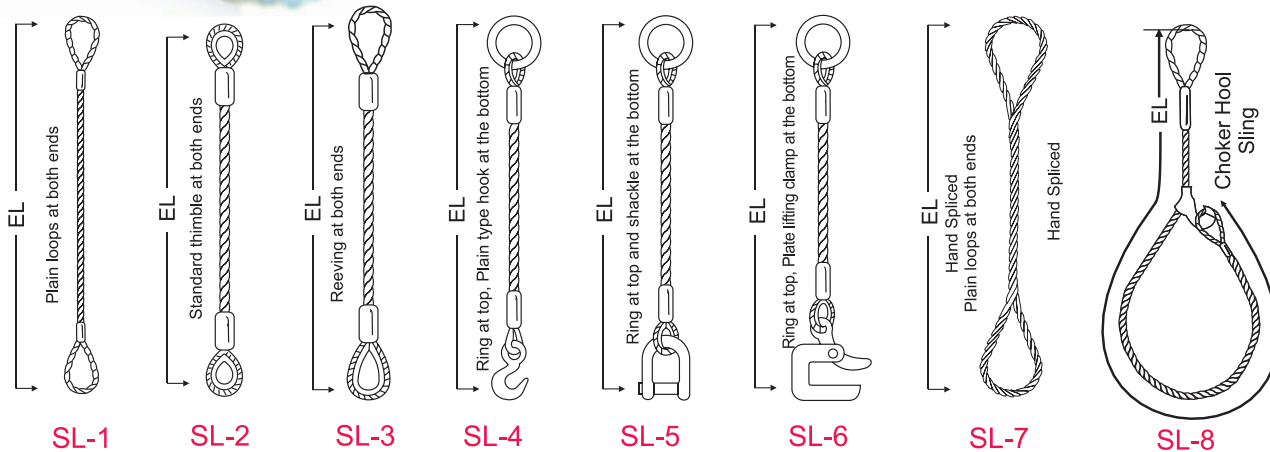


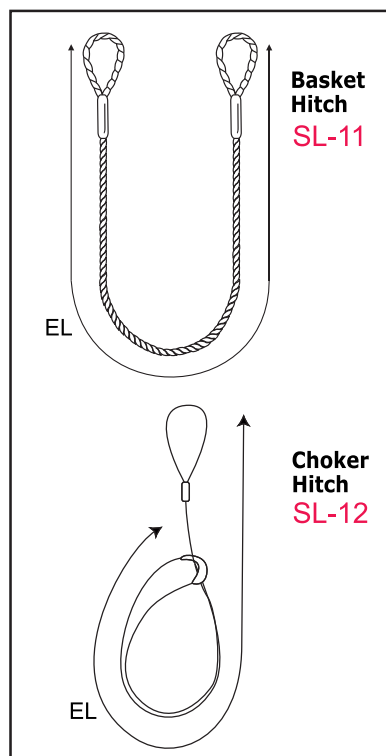


## Single Part Slings



**LOOP TYPE SINGLE PART SLINGS**  
Max. Safe Working Load in Tons for 6 x 19, 6 x 36 Construction

Rope Dia. (mm)	Vertical	Fibre Core Basket	Chocker	Vertical	Steel Core Basket	Chocker
6	0.4	0.8	0.3	0.5	1	0.4
8	0.8	1.5	0.6	0.8	1.7	0.7
9	1	2	0.8	1.1	2.1	0.8
10	1.2	2.4	1	1.3	2.6	1.1
12	1.8	3.5	1.4	1.9	3.8	1.5
13	2.1	4.1	1.6	2.2	4.4	1.8
14	2.4	4.8	1.9	2.6	5.2	2.1
16	3.1	6.2	2.5	3.4	6.7	2.7
18	4	7.9	3.2	4.3	8.5	3.4
19	4.4	8.8	3.5	4.8	9.5	3.8
20	4.9	9.7	3.9	5.3	10.5	4.2
22	5.9	11.8	4.7	6.4	12.7	5.1
24	7	14	5.6	7.2	14.4	5.8
25	7.5	15	6	7.6	15.2	6.1
26	8.1	16.1	6.4	8.7	17.4	6.9
28	9.3	18.7	7.5	10.1	20.1	8.1
32	12.2	24.4	9.8	13.2	26.3	10.5
35	14.4	28.8	11.5	15.7	31.5	12.6
38	17.6	35.2	14.1	18.6	37.1	14.8
40	18.4	36.9	14.8	20.6	41.1	16.5
44	23.1	46.1	18.4	24.9	49.8	19.9
50	27.4	54.8	21.9	34.8	69.5	27.8
56	37	74	29.6	40.3	80.7	32.3
64	48	96	38.4	52.7	105.3	42.1
70	55	110	44	65	130	52



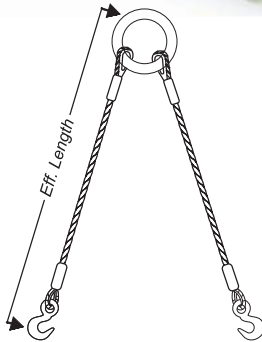
**FACTOR OF SAFETY 5:1 TENSILE STRENGTH : 1770/1960 N/mm<sup>2</sup>**

Note: The capacity indicated in the above table, for basket hitch and choker hitch is for guidance only, vertical column is the actual load the slings can be tested and certified in other words safe working load is applicable for vertical lift only.



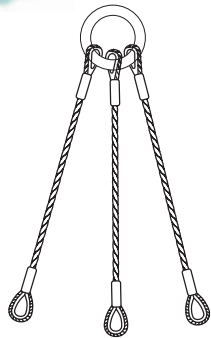
# Multiple Leg Slings

SL-13



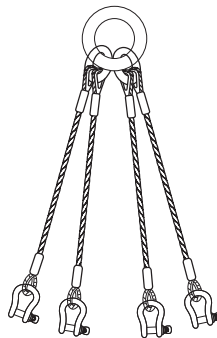
Two leg wire rope sling with main ring at top and hooks at the bottom

SL-14



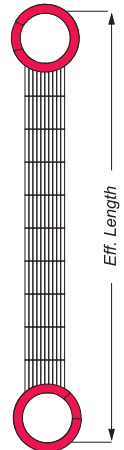
Three leg wire rope sling with main ring at top and thimble at the bottom.

SL-15



Four leg wire rope sling with main ring and intermediate ring at top with bow shackle at bottom.

SL-16



Four leg wire rope sling with thimble at top and plain loops at bottom.

Master links also available in the following varieties



Oval type



Pear shaped

For other combination of multi-leg slings refer our catalogue

Braided / Plaited belt lifting slings Available in standard lts. of 10m & 10" in capacities ranging from 10 to 40 tons with steel core ropes.

MULTIPLE LEG SLINGS															
6 x 19/6 x 36 Groups Steel Core								6 x 19/6 x 36 Groups Steel Core							
Rope Dia. (mm)	Safe Working Load			Minimum Breaking Load	Proof Load	Safe Working Load			Minimum Breaking Load	Proof Load					
	Single Leg	2 Leg	3&4 Leg			Single Leg	2 Leg	3&4 Leg							
	Leg Angle (0-90)	Leg Angle (90-120)	Leg Angle (0-90)	Leg Angle (90-120)	Leg Angle (0-90)	Leg Angle (90-120)	Leg Angle (0-90)	Leg Angle (90-120)	Leg Angle (0-90)	Leg Angle (90-120)	Leg Angle (0-90)	Leg Angle (90-120)	Leg Angle (0-90)	Leg Angle (90-120)	
6	0.5	0.7	1.1	0.5	0.8	2.6	1	0.4	0.6	0.8	0.4	0.6	2	0.8	
8	0.8	1.2	1.8	0.8	1.3	4.2	1.7	0.8	1.1	1.6	0.8	1.2	3.9	1.5	
9	1.1	1.5	2.2	1.1	1.6	5.3	2.1	1	1.4	2.1	1	1.5	4.9	2	
10	1.3	1.9	2.8	1.3	2	6.6	2.6	1.2	1.7	2.6	1.2	1.8	6.1	2.4	
12	1.9	2.7	4	1.9	2.8	9.5	3.8	1.8	2.5	3.7	1.8	2.6	8.8	3.5	
13	2.2	3.1	4.7	2.2	3.3	11.3	4.4	2.1	2.9	4.3	2.1	3.1	10.3	4.1	
14	2.6	3.6	5.4	2.6	3.9	13	5.2	2.4	3.3	5	2.4	3.6	11.9	4.8	
16	3.4	4.7	7.1	3.4	5	16.8	6.7	3.1	4.4	6.6	3.1	4.7	15.6	6.2	
18	4.3	6	8.9	4.3	6.4	21.3	8.5	4	5.5	8.3	4	5.9	19.8	7.9	
19	4.8	6.7	10	4.8	7.1	23.8	9.5	4.4	6.2	9.2	4.4	6.6	22	8.8	
20	5.3	7.4	11	5.3	7.9	26.3	10.5	4.9	6.8	10.2	4.9	7.3	24.4	9.7	
22	6.4	8.9	13.4	6.4	9.5	31.8	12.7	5.9	8.2	12.4	5.9	8.8	29.5	11.8	
24	7.2	10.1	15.1	7.2	10.8	36	14.4	7	9.8	14.7	7	10.5	35.1	14	
25	7.6	10.6	16	7.6	11.4	38	15.2	7.5	10.5	15.8	7.5	11.3	37.5	15	
26	8.7	12.2	18.2	8.7	13	43.4	17.4	8.1	11.3	16.9	8.1	12.1	40.3	16.1	
28	10.1	14.1	21.1	10.1	15.1	50.4	20.1	9.3	13.1	19.6	9.3	14	46.7	18.7	
32	13.2	18.4	27.7	13.2	19.8	65.9	26.3	12.2	17.1	25.6	12.2	18.3	61	24.4	
35	15.7	22	33.1	15.7	23.6	78.7	31.5	14.4	20.2	30.2	14.4	21.6	72	28.8	
38	18.6	26	39	18.6	27.8	92.8	37.1	17.6	24.6	37	17.6	26.4	88	35.2	
40	20.6	28.8	43.2	20.6	30.9	102.9	40.1	18.4	25.8	38.7	18.4	27.7	92.2	36.9	
44	24.9	34.8	52.3	24.9	37.3	124.5	49.8	23.1	32.3	48.4	23.1	34.6	115.3	46.1	
50	34.8	48.7	73	34.8	52.1	173.8	69.5	27.4	38.4	57.6	27.4	41.1	137.1	54.8	
56	40.3	56.5	84.7	40.3	60.5	201.6	80.7	37	51.8	77.7	37	55.5	185	74	
64	52.7	73.7	110.6	52.7	79	263.3	105.3	48	67.2	110.8	48	72	240	96	
70	65	91	136.5	65	97.5	325	130	55	77	115.5	55	82.5	275	110	

FACTOR OF SAFETY 5:1 TENSILE STRENGTH : 1770/1960 N/mm<sup>2</sup>



## Abi-Flex Cable Laid Grommet

Cable Laid Grommets have six ropes laid helically around a wire rope core with ends joined by a hand tucked or a mechanical splice to form an endless body. Highly flexible, they resist kinks and are easy to handle. Minimum circumference of the sling is 96 times the grommet body diameter.

All capacities in tons

Rated capacities basket hitch and vertical lift based on D/d ratio of 5 when "D" = diameter of the finished grommet.

Rated capacities based on pin diameter no smaller than the 5 times the diameter.

Rated capacities based on design factor of 5.

Sling angles less than 30° degrees shall not be used.

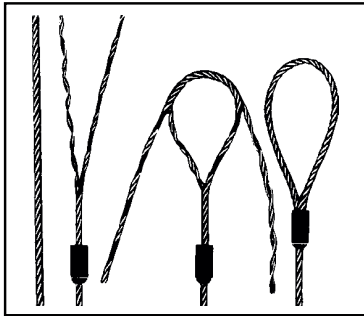


Rated Capacity in Tons							
EIP Component Rope Diameter	Finished Sling Body Diameter	WLL Vertical	Basket Hitch**				
			WLL Choker	WLL Vertical	WLL 30°	WLL 45°	WLL 60°
7 x 7 x 7 Galvanized							
1/8	3/8	1.6	1	3.2	1.6	2.2	2.8
3/16	9/16	3.5	2.3	6.9	3.5	4.9	6
7/32	5/8	4.5	2.9	9	4.5	6.4	7.8
7 x 6 x 19 and 7 x 6 x 37--EIP							
1/4	3/4	5.6	3.6	11	5.6	7.9	9.7
5/16	15/16	8.7	5.6	17	8.7	12	15
3/8	1-1/8	12	8	25	12	17	21
7/16	1-5/16	17	11	33	17	23	29
1/2	1-1/2	21	14	43	21	30	37
9/16	1-11/16	27	17	53	27	38	46
5/8	1-7/8	33	21	66	33	46	57
3/4	2-1/4	46	30	92	46	65	80
7/8	2-5/8	62	40	123	62	87	107
1	3	79	51	158	79	112	137
1-1/8	3-3/8	98	64	196	98	138	170
1-1/4	3-3/4	119	77	237	119	168	205



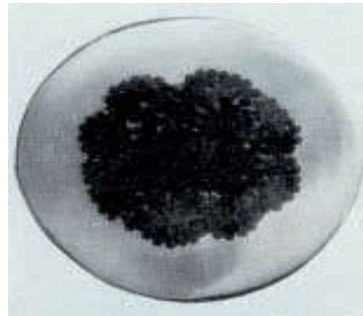
## Flemish Eye Sling

Eyes are formed using the flemish eye splice. Ends are secured by pressing a metal sleeve over the ends of the strands of the splice. Pull is directly along the centerline of rope and eye. Gives most efficient use of rope capacity and is economical.



**Flemish Eye Splice**

In the standard flemish eye mechanical splice rope is separated into two parts—3 adjacent strands, and 3 adjacent strands and core. These two parts then re-laid in opposite directions to form an eye, and ends are secured with a pressed metal sleeve.

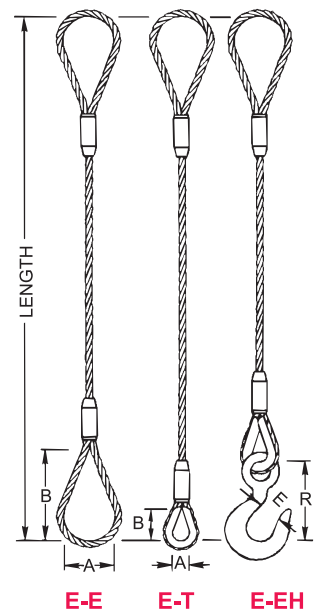


**Swaging Provides Positive Grip**

This cutaway of a metal sleeve shows how metal “flows” into valleys between strands, swaged onto a splice. Pull is directly along the centerline of rope and eye. Gives most efficient use of rope capacity and is economical.



Rope Dia.	RATED CAPACITY - Tons*						Eye Dimensions				Alloy Eye Hoist Hook			
	Vert.	*** Choker Hitch	Basket Hitch			A	B	Thimble A	B	WLL** Tons	E	R		
			U	30°	45°								60°	
6 x 19 IWRC	1/4	0.65	0.48	1.3	1.1	0.91	0.65	2	4	7/8	1 5/8	1	.90	3.34
	5/16	1.0	0.74	2.0	1.7	1.4	1.0	2 1/2	5	1 1/16	1 7/8	1	.90	3.34
	3/8	1.4	1.1	2.9	2.5	2.0	1.4	3	6	1 1/8	2 1/8	1.5	.93	3.81
	7/16	1.9	1.4	3.9	3.4	2.7	1.9	3 1/2	7	1 1/4	2 1/4	2	1	4.14
	1/2	2.5	1.9	5.1	4.4	3.6	2.5	4	8	1 1/2	2 3/4	3	1.13	4.69
	9/16	3.2	2.4	6.4	5.5	4.5	3.2	4 1/2	9	1 1/2	2 3/4	5	1.47	5.77
	5/8	3.9	2.9	7.8	6.8	5.5	3.9	5	10	1 3/4	3 1/4	5	1.47	5.77
	3/4	5.6	4.1	11	9.7	7.9	5.6	6	12	2	3 3/4	7	1.75	7.37
	7/8	7.6	5.6	15	13	11	7.6	7	14	2 1/4	4 1/4	11	2.29	9.07
	1	9.8	7.2	20	17	14	9.8	8	16	2 1/2	4 1/2	11	2.29	9.07
6 x 37 IWRC	1 1/8	12	9.1	24	21	17	12	9	18	2 7/8	5 1/8	15	2.50	10.08
	1 1/4	15	11	30	26	21	15	10	20	2 7/8	5 1/8	15	2.50	10.08
	1 3/8	18	13	36	31	25	18	11	22	3 1/2	6 1/4	22	3.3	12.53
	1 1/2	21	16	42	37	30	21	12	24	3 1/2	6 1/4	22	3.3	12.53
	1 5/8	24	18	49	42	35	24	13	26	4	8	30	4	14.06
	1 3/4	28	21	57	49	40	28	14	28	4 1/2	9	30	4	14.06
	2	37	28	73	63	52	37	16	32	6	12	37	4.25	18.19
	2 1/4	44	35	89	77	63	44	18	36	7	14	45	4.75	20.12
	2 1/2	54	42	109	94	77	54	20	40	-	-	60	5.75	23.72
	2 3/4	65	51	130	113	92	65	22	44	-	-	-	-	-
3	77	60	153	133	108	77	24	48	-	-	-	-	-	
3 1/2	102	79	203	176	144	102	28	56	-	-	-	-	-	
4	130	101	259	224	183	130	32	64	-	-	-	-	-	





## 3-Part 9-Part 27-Part Sling

The 3-Part 9 Part & 27 Part allows the purchase of multiple part slings for big lifts which can easily be taken apart to provide slings for smaller lifts or storage.



Diameter of Individual Parts	3 Parts EIP		9 Parts EIP		27 Parts EIP	
	Vertical Rated Load	Finished Diameter	Vertical Rated Load	Finished Diameter	Vertical Rated Load	Finished Diameter
1/4"	1.7	1/2 "	4.6	1"	12.9	2"
5/16"	2.6	5/8"	7	1-1/4"	19.9	2-1/2"
3/8"	3.6	3/4"	10	1-1/2"	28.5	3"
7/16"	4.9	7/8"	13.8	1-3/4"	38.6	3-1/2"
1/2"	6.4	1"	18	2"	50	4"
9/16"	8	1-1/8"	22.7	2-1/4"	63.5	4-1/2"
5/8"	9.9	1-1/4"	27.8	2-1/2"	78	5"
3/4"	14	1-1/2"	39.7	3"	110	6"
7/8"	19	1-3/4"	53.7	3-1/2"	150	7"
1"	24.8	2"	69.8	4"	195	8"
1-1/8"	31.2	2-1/4"	87.7	4-1/2"	245	9"
1-1/4"	38.4	2-1/2"	108	5"	302	10"
1-3/8"	46	2-3/4"	130	5-1/2"	363.1	1"
1-1/2"	55	3"	154	6"	430	12"
1-5/8"	63.4	3-1/4"	178	6-1/2"	499	13"
1-3/4"	73	3-1/2"	206	7"	578	14"
2"	95	4"	267	8"	748	16"
2-1/4"	118	2-1/2"	333	9"	934	18"
2-1/2"	145	5"	408	10"	1140	20"



# Safe Lifters ESTD. 1986

DEALERS IN LIFTING EQUIPMENTS

Pundol Apartments, Shop No. 5 & 6, 160 M.G. Road, Pune - 411001. (India)

Tel. : +91 - 20 - 6708 8100

Fax : +91 - 20 - 6708 8101

Email : sales@safelifters.com

Website : www.safelifters.com

## Special Application Wire Rope Slings

