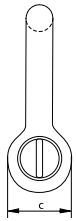
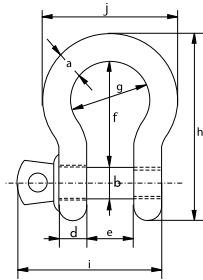




G-4161



Green Pin® Bow Shackle SC

Standard bow shackle with screw collar pin

- **Material:** bow and pin high tensile steel, grade 6, quenched and tempered
- **Safety Factor:** MBL equals 6 x WLL
- **Standard:** ISO 2415, EN 13889 and meets performance requirements of US Fed. Spec. RR-C-271 Type IVA Class 2, grade A, from 2 t and upward these shackles comply with ASME B30.26
- **Finish:** hot dipped galvanized
- **Temperature Range:** -40 °C up to +200 °C
- **Certification:** [2.1](#) [2.2](#) [3.1](#) [MTC*](#) [DNV 0378](#) [CE IIA](#) [ABS PDA](#) [ABS MA](#)
- **Article code:** scan QR code to see article codes

Scan for
additional
product
details



working load limit	diameter bow	diameter pin	diameter eye	width eye	width inside	length inside	width bow	length	length bolt	width	weight each
t	a mm	b mm	c mm	d mm	e mm	f mm	g mm	h mm	i mm	j mm	kg
0.33	5	6	12	5	9.5	22	16	36	29.5	26	0.02
0.5	7	8	16	7	12	29	20	48	38	34	0.05
0.75	9	10	20	9	13.5	32	22	56	46.5	40	0.10
1	10	11	23	10	17	37	26	64	54	46	0.14
1.5	11	13	25	11	19	43	29	73	59.5	51	0.19
2	13.5	16	34	13	22	51	32	90	73	59	0.36
3.25	16	19	40	16	27	64	43	110	89	75	0.63
4.75	19	22	46	19	31	76	51	129	103	89	1.01
6.5	22	25	52	22	36	83	58	144	119	102	1.50
8.5	25	28	59	25	43	95	68	164	137	118	2.21
9.5	28	32	67	28	47	108	75	186	153	131	3.16
12	32	35	73	32	51	115	83	201	170	147	4.31
13.5	35	38	79	35	57	133	92	227	186	162	5.58
17	38	42	88	38	60	146	99	249	203	175	7.43
25	45	50	104	45	74	178	126	300	243	216	12.5
35	50	57	112	50	83	197	138	332	272	238	17.2
42.5	57	65	132	57	95	222	160	378	310	274	26.3
55	65	70	145	65	105	260	180	433	344	310	37.6

CAD RFID INFO

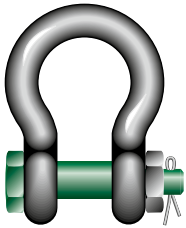




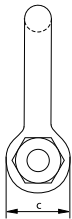
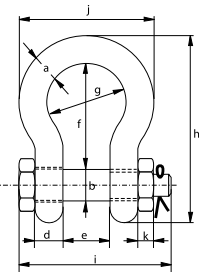
Green Pin® Bow Shackle BN

Standard bow shackle with safety bolt

Scan for additional product details



G-4163



- **Material:** bow and pin high tensile steel, grade 6, quenched and tempered
- **Safety Factor:** MBL equals 6 x WLL
- **Standard:** ISO 2415, EN 13889 and meets performance requirements of US Fed. Spec. RR-C-271 Type IVA Class 3, grade A, from 2 t and upward these shackles comply with ASME B30.26
- **Finish:** hot dipped galvanized
- **Temperature Range:** -40 °C up to +200 °C
- **Certification:** 2.1 2.2 3.1 MTC* DNV 2.7-1^a* DNV 2.7-1^b* DNV 0378 CE IIA ABS PDA ABS MA
- **Article code:** scan QR code to see article codes

working load limit	diameter bow	diameter pin	diameter eye	width eye	width inside	length inside	width bow	length	length bolt	width	thickness nut	weight each
t	a mm	b mm	c mm	d mm	e mm	f mm	g mm	h mm	i mm	j mm	k mm	kg
0.5	7	8	16	7	12	29	20	48	42	34	4	0.06
0.75	9	10	20	9	13.5	32	22	56	50	40	5	0.11
1	10	11	23	10	17	37	26	64	60	46	8	0.16
1.5	11	13	25	11	19	43	29	73	67	51	11	0.22
2	13.5	16	34	13	22	51	32	90	80	59	13	0.42
3.25	16	19	40	16	27	64	43	110	98	75	17	0.74
4.75	19	22	46	19	31	76	51	129	115	89	19	1.18
6.5	22	25	52	22	36	83	58	144	130	102	22	1.77
8.5	25	28	59	25	43	95	68	164	150	118	25	2.58
9.5	28	32	67	28	47	108	75	186	166	131	27	3.66
12	32	35	73	32	51	115	83	201	184	147	30	4.91
13.5	35	38	79	35	57	133	92	227	197	162	33	6.54
17	38	42	88	38	60	146	99	249	202	175	19	8.19
25	45	50	104	45	74	178	126	300	243	216	23	14
35	50	57	112	50	83	197	138	332	269	238	26	18.8
42.5	57	65	132	57	95	222	160	378	301	274	29	28.3
55	65	70	145	65	105	260	180	433	329	310	32	39.6
85	75	83	167	75	127	330	190	530	381	340	39	62

CAD RFID INFO



* For shackles ≥ WLL 2 t



Green Pin® Dee Shackle SC

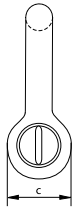
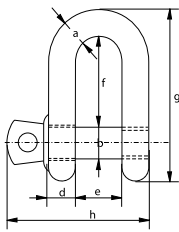
Standard dee shackle with screw collar pin

Scan for additional product details



- **Material:** bow and pin high tensile steel, grade 6, quenched and tempered
- **Safety Factor:** MBL equals 6 x WLL
- **Standard:** ISO 2415, EN 13889 and meets performance requirements of US Fed. Spec. RR-C-271 Type IVB Class 2, grade A, from 2 t upward these shackles comply with ASME B30.26
- **Finish:** hot dipped galvanized
- **Temperature Range:** -40 °C up to +200 °C
- **Certification:** 2.1 2.2 3.1 MTC³ DNV 0378 CE IIIA ABS PDA ABS MA
- **Article code:** scan QR code to see article codes

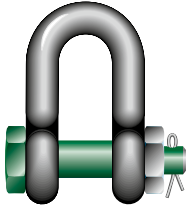
G-4151



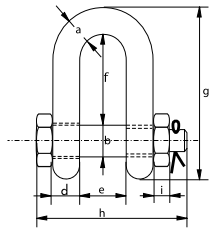
working load limit	diameter bow	diameter pin	diameter eye	width eye	width inside	length inside	length	length bolt	weight each
t	a mm	b mm	c mm	d mm	e mm	f mm	g mm	h mm	kg
0.33	5	6	12	5	9.5	19	33	29.5	0.02
0.5	7	8	16	7	12	22.5	41.5	38	0.05
0.75	9	10	20	9	13.5	27	51	46.5	0.09
1	10	11	23	10	17	32	59	54	0.14
1.5	11	13	25	11	19	37	67	59.5	0.19
2	13.5	16	34	13	22	43	82	73	0.32
3.25	16	19	40	16	27	51	97	89	0.54
4.75	19	22	46	19	31	59	112	103	0.87
6.5	22	25	52	22	36	73	134	119	1.34
8.5	25	28	59	25	43	85	154	137	2.08
9.5	28	32	67	28	47	90	168	153	2.77
12	32	35	73	32	51	94	180	170	3.72
13.5	35	38	79	35	57	115	209	186	5.44
17	38	42	88	38	60	127	230	203	6.85
25	45	50	104	45	74	149	271	243	11.5
35	50	57	112	50	83	171	306	272	16.9
42.5	57	65	132	57	95	190	346	310	24.6
55	65	70	145	65	105	203	376	344	32.7

CAD RFID INFO





G-4153

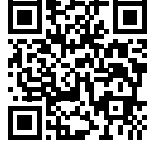


Green Pin® Dee Shackle BN

Standard dee shackle with safety bolt

- **Material:** bow and pin high tensile steel, grade 6, quenched and tempered
- **Safety Factor:** MBL equals 6 x WLL
- **Standard:** ISO 2415, EN 13889, ASME B30.26 and meets performance requirements of US Fed. Spec. RR-C-271 Type IVB Class 3, grade A
- **Finish:** hot dipped galvanized
- **Temperature Range:** -40 °C up to +200 °C
- **Certification:** 2.1 2.2 3.1 MTC^a DNV 2.7-1^a * DNV 2.7-1^b * DNV 0378 CE IIA ABS PDA ABS MA
- **Article code:** scan QR code to see article codes

Scan for
additional
product
details

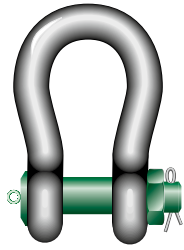


working load limit	diameter bow	diameter pin	diameter eye	width eye	width inside	length inside	length	length bolt	thickness nut	weight each
t	a mm	b mm	c mm	d mm	e mm	f mm	g mm	h mm	i mm	kg
2	13.5	16	34	13	22	43	82	80	13	0.39
3.25	16	19	40	16	27	51	97	98	17	0.67
4.75	19	22	46	19	31	59	112	115	19	1.08
6.5	22	25	52	22	36	73	134	130	22	1.66
8.5	25	28	59	25	43	85	154	150	25	2.46
9.5	28	32	67	28	47	90	168	166	27	3.40
12	32	35	73	32	51	94	180	184	30	4.51
13.5	35	38	79	35	57	115	209	197	33	6.10
17	38	42	88	38	60	127	230	202	19	7.63
25	45	50	104	45	74	149	271	243	23	12.9
35	50	57	112	50	83	171	306	269	26	17.4
42.5	57	65	132	57	95	190	346	301	29	25.9
55	65	70	145	65	105	203	376	329	32	35.3
85	75	83	167	75	127	229	429	381	39	53

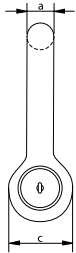
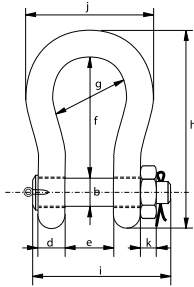
CAD RFID INFO



* For shackles \geq WLL 2 t



P-6036



Green Pin® Heavy Duty Bow Shackle BN

High load capacity bow shackle with safety bolt

- **Material:** bow and pin alloy steel, grade 8 quenched and tempered
- **Safety Factor:** MBL equals 5 x WLL
- **Standard:** ASME B30.26
- **Finish:** shackle bow painted silver, pin painted green
- **Temperature range:** -40 °C up to +200 °C ≤ WLL 600 t
- **Certification:** 2.1 2.2 3.1 MTC^a CE IIA **Optional***:** MTC^b * LROS^{**} MPI^a US^a
- **Article code:** scan QR code to see article codes

Scan for
additional
product
details



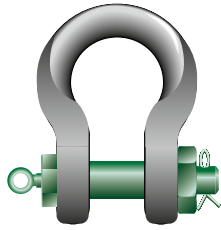
working load limit	diameter bow	diameter pin	diameter eye	width eye	width inside	length inside	width bow	length	length bolt	width	thickness nut	weight pin	weight each
t	a mm	b mm	c mm	d mm	e mm	f mm	g mm	h mm	i mm	j mm	k mm	kg	kg
120	95	95	204	95	147	400	238	644	453	428	50	28.1	114
150	105	108	235	105	169	410	275	686	496	485	50	39.2	155
200	120	130	270	120	179	513	290	833	564	530	71	69.2	235
250	130	140	284	130	205	554	305	896	614	565	71	85.5	295
300	140	150	308	140	205	618	305	987	644	585	81	102	366
400	170	175	376	164	231	669	325	1115	698	665	70	151	620
500	180	185	398	164	256	719	350	1191	728	710	70	173	720
600	200	205	444	189	282	719	375	1244	810	775	70	228	975
700	210	215	454	204	308	718	400	1263	870	820	70	265	1075
800	210	220	464	204	308	718	400	1270	870	820	70	276	1100
900	220	230	485	215	328	718	420	1296	920	860	70	319	1250
1000	240	240	515	215	349	718	420	1336	940	900	70	351	1460
1250	260	270	585	230	369	768	450	1456	1025	970	70	481	1940
1500	280	290	625	230	369	818	450	1556	1025	1010	70	556	2305

CAD RFID

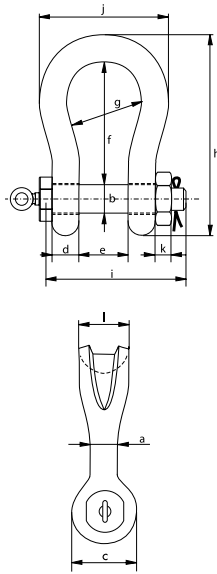
* Standard certification for shackles ≥ WLL 400 t

** For shackles ≥ WLL 120 t and ≤ WLL 600 t available with or without LROS.
For shackles ≥ WLL 700 t available with LROS

*** With additional charges



P-6033

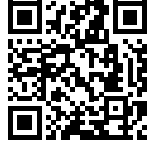


Green Pin® Sling Shackle BN

High load capacity bow shackle with safety bolt

- **Material:** bow and pin alloy steel, grade 8, quenched and tempered
- **Safety Factor:** MBL equals 5 x WLL
- **Standard:** ASME B30.26 ≤ WLL 600 t
- **Finish:** shackle bow painted silver, pin painted green
- **Temperature Range:** -40 °C up to +200 °C ≤ WLL 600 t
-20 °C up to +200 °C ≥ WLL 700 t
- **Certification:** 2.1 2.2 3.1 MTC^a CE IIA **Optional***:** MTC^b * LROS^{**} MPI^a US^b
- **Article code:** scan QR code to see article codes

Scan for additional product details



working load limit	diameter body	diameter pin	diameter eye	width eye	width inside	length inside	width bow	length	length bolt	width	thickness nut	bearing surface	weight pin	weight each
t	a	b	c	d	e	f	g	h	i	j	k	l	kg	kg
7	22	22	46	19	32	96	64	153	115	110	19	41	0.99	1.97
12.5	28	28	61	25	44	120	82	197	151	146	24	54	1.82	4.27
18	35	35	69	30	54	148	102	239	171	180	29	64	2.35	6.85
30	40	42	90	35	69	165	126	279	207	200	34	79	4.23	12.5
40	55	51	109	45	84	199	140	331	252	235	38	97	4.32	20.3
55	60	57	115	55	90	240	160	389	294	270	45	100	4.6	30.4
75	68	70	126	54	110	290	185	473	317	331	40	120	11.4	45
125	85	80	156	85	137	366	220	583	413	390	40	150	18.6	92
150	94	95	181	89	147	391	253	648	445	449	50	170	27.3	140
200	110	105	201	100	158	481	280	759	480	500	50	205	36.9	205
250	126	120	229	110	179	542	300	860	535	552	60	240	54.3	264
300	136	134	246	134	195	601	350	946	590	620	70	265	79.4	360
400	160	160	295	145	231	576	370	995	687	710	80	320	127	583
500	170	180	330	160	263	681	450	1161	762	850	90	340	176	862
600	190	200	360	170	289	741	490	1264	827	930	100	370	234	1134
700	200	215	392	190	315	751	540	1284	879	901	100	400	290	1142
800	218	230	420	200	342	851	554	1426	942	947	110	420	350	1418
900	242	255	466	220	368	851	580	1488	1023	1023	120	440	464	1810
1000	260	270	490	240	399	851	614	1532	1103	1107	120	460	559	2385
1250	285	300	510	260	452	931	650	1666	1227	1182	150	530	782	3110
1550	285	320	550	280	483	950	680	1710	1300	1253	150	560	918	3655

CAD RFID

* Standard certification for shackles ≥ WLL 400 t

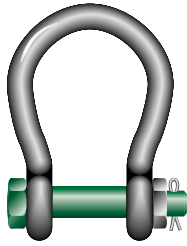
** For shackles ≥ WLL 75 t and ≤ WLL 600 t available with or without LROS.
For shackles ≥ WLL 700 t available with LROS

*** With additional charges

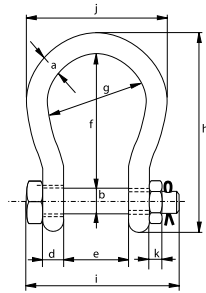


Green Pin BigMouth® Bow Shackle BN

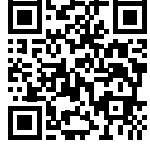
Grade 8 bow shackle with safety bolt and wider shackle mouth



G-4263



- **Material:** bow and pin alloy steel, grade 8, quenched and tempered
- **Safety Factor:** MBL equals 6 x WLL
- **Standard:** ASME B30.26
- **Finish:** hot dipped galvanized
- **Temperature Range:** -20 °C up to +200 °C
- **Certification:** [2.1](#) [2.2](#) [3.1](#) [MTC](#) [CE IIA](#)
- **Article code:** scan QR code to see article codes



working load limit	diameter bow	diameter pin	diameter eye	width eye	width inside	length inside	width bow	length	length bolt	width	thickness nut	weight each
t	a mm	b mm	c mm	d mm	e mm	f mm	g mm	h mm	i mm	j mm	k mm	kg
4.75	22	25	52	22	63	112	88	173	157	132	22	2.08
6.5	25	28	59	25	75	135	105	204	183	155	25	3.14
8.5	28	32	66	28	82	148	115	225	205	171	27	4.36
9.5	32	35	72	32	90	162	126	248	224	190	30	5.95
12	35	38	79	35	100	180	140	274	245	210	33	7.87
16	38	42	88	38	106	216	159	319	248	235	19	10.2
25	45	50	103	45	127	248	175	370	296	265	23	16.7
30	50	57	118	50	146	273	207	411	332	307	26	25
55	65	70	145	65	165	314	213	487	389	343	32	45
75	83	83	164	83	184	330	254	537	455	420	39	70

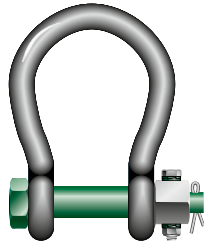
CAD RFID



Green Pin BigMouth® Bow Shackle FN

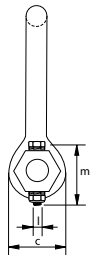
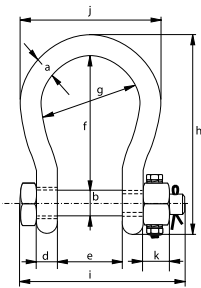
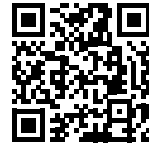
Grade 8 bow shackle with safety bolt, fixed nut and wider shackle mouth

Scan for additional product details



G-4243

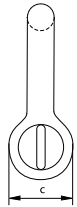
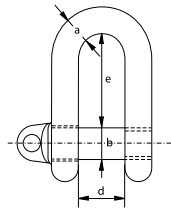
- **Material:** bow and pin alloy steel, grade 8, quenched and tempered
- **Safety Factor:** MBL equals 6 x WLL
- **Standard:** ASME B30.26
- **Finish:** hot dipped galvanized
- **Temperature range:** -20 °C up to +200 °C
- **Certification:** 2.1 2.2 3.1 MTC CE IIA
- **Article code:** scan QR code to see article codes



working load limit	diameter bow	diameter pin	diameter eye	width eye	width inside	length inside	width bow	length	length bolt	width	thickness nut	securing bolt thread	securing bolt length	torque	weight each
t	a mm	b mm	c mm	d mm	e mm	f mm	g mm	h mm	i mm	j mm	k mm	l mm	m mm	Nm	kg
4.75	22	25	52	22	63	112	88	173	157	132	22	M8	50	20	2.08
6.5	25	28	59	25	75	135	105	204	183	155	25	M8	55	20	3.14
8.5	28	32	66	28	82	148	115	225	205	171	27	M10	60	39	4.36
9.5	32	35	72	32	90	162	126	248	224	190	30	M10	65	39	5.95
12	35	38	79	35	100	180	140	274	245	210	33	M10	70	39	7.87
16	38	42	88	38	106	216	159	319	248	235	19	M8	75	20	10.2
25	45	50	103	45	127	248	175	370	296	265	23	M8	90	20	16.7
30	50	57	118	50	146	273	207	411	332	307	26	M10	100	39	25
55	65	70	145	65	165	314	213	487	389	343	32	M12	120	68	45
75	83	83	164	83	184	330	254	537	455	420	39	M12	140	68	70

CAD RFID INFO

C

S-3351
G-3351

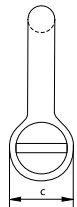
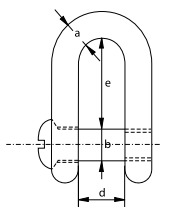
Shackles generally to DIN 82101 type A

Dee shackle with screw collar pin

- **Material:** bow and pin high tensile steel, grade 4
- **Safety Factor:** MBL equals 5 x WLL
- **Standard:** generally to DIN 82101 type A
- **Finish:** hot dipped galvanized or self-coloured
- **Certification:** 2.1 2.2 CE IIA
- **Note:** shackle no. 0.1 is electro-galvanized and will not have any markings as it is too small

no.	working load limit	diameter bow	diameter pin	diameter eye	width inside	length inside	weight each
	t	a mm	b mm	c mm	d mm	e mm	kg
0.1	0.1	5	5	10	7	15.5	0.02
0.16	0.16	6	6	12	8	18	0.02
0.25	0.25	8	8	16	11	24	0.05
0.4	0.4	10	10	20	14	30	0.10
0.6	0.63	12	12	24	17	36	0.18
1	1	13	16	32	21	49	0.30
1.6	1.6	16	20	40	27	61	0.57
2	2	20	22	44	30	67	0.98
2.5	2.5	22	24	48	33	73	1.30
3	3.15	25	27	54	38	83.5	1.85
4	4	28	30	60	42	91	2.53
5	5	32	36	72	47	111	4
6	6.3	36	39	78	53	119.5	5.30
8	8	41	45	90	60	139.5	7.90
10	10	44	48	96	66	147	10
12	12	49	52	104	73	158	13.5
16	16	55	60	120	81	185	19.2
20	20	61	68	136	90	211	28
25	25	67	72	144	100	221	34

C

S-3352
G-3352

Shackles generally to DIN 82101 type B

Dee shackle with counter sunk screw pin

- **Material:** bow and pin high tensile steel, grade 4
- **Safety Factor:** MBL equals 5 x WLL
- **Standard:** generally to DIN 82101 type B
- **Finish:** hot dipped galvanized or self-coloured
- **Certification:** 2.1 2.2 CE IIA
- **Note:** shackle no. 0.1 is electro-galvanized and will not have any markings as it is too small

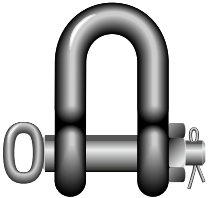
no.	working load limit	diameter bow	diameter pin	diameter eye	width inside	length inside	weight each
	t	a mm	b mm	c mm	d mm	e mm	kg
0.4	0.4	10	10	20	14	30	0.09
0.6	0.63	12	12	24	17	36	0.17
1	1	13	16	32	21	49	0.29
1.6	1.6	16	20	40	27	61	0.54
2	2	20	22	44	30	67	0.98
2.5	2.5	22	24	48	33	73	1.23
3	3.15	25	27	54	38	83.5	1.80
4	4	28	30	60	42	91	2.60
5	5	32	36	72	47	111	3.80
6	6.3	36	39	78	53	119.5	5.20
8	8	41	45	90	60	139.5	7.60
10	10	44	48	96	66	147	9.70

C

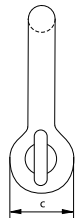
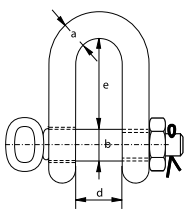
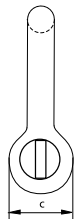
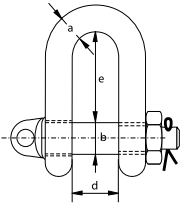
Shackles generally to DIN 82101 type C

Dee shackle with safety bolt

- **Material:** bow and pin high tensile steel, grade 4
- **Safety Factor:** MBL equals 5 x WLL
- **Standard:** generally to DIN 82101 type C
- **Finish:** hot dipped galvanized or self-coloured
- **Certification:** 2.1 2.2 CE IIA
- **Note:** with screw collar pin : up to size no. 25
with hand-grip : from size no. 32



S-3356
G-3356



no.	working load limit	diameter bow	diameter pin	diameter eye	width inside	length inside	weight each
	t	a mm	b mm	c mm	d mm	e mm	kg
0.4	0.4	10	10	20	14	30	0.11
0.6	0.63	12	12	24	17	36	0.20
1	1	13	16	32	21	49	0.37
1.6	1.6	16	20	40	27	61	0.69
2	2	20	22	44	30	67	1.13
2.5	2.5	22	24	48	33	73	1.50
3	3.15	25	27	54	38	83.5	2.15
4	4	28	30	60	42	91	2.93
5	5	32	36	72	47	111	4.70
6	6.3	36	39	78	53	119.5	6.33
8	8	41	45	90	60	139.5	8.60
10	10	44	48	96	66	147	10.8
12	12	49	52	104	73	158	14.4
16	16	55	60	120	81	185	20.5
20	20	61	68	136	90	211	27.9
25	25	67	72	144	100	221	36
32	32	74	80	160	110	246	49
40	40	75	90	180	125	276	70
50	50	88	100	200	140	307	100
63	63	96	110	220	155	339	140
80	80	110	125	250	175	385.5	200
100	100	125	140	280	200	430	280