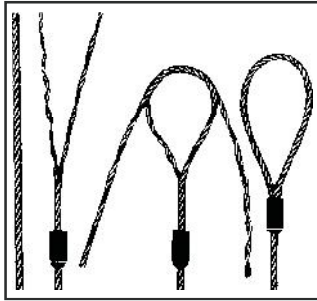




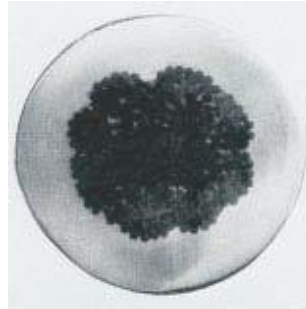
Flemish Eye Sling

Eyes are formed using the flemish eye splice. Ends are secured by pressing a metal sleeve over the ends of the strands of the splice. Pull is directly along the centerline of rope and eye. Gives most efficient use of rope capacity and is economical.



Flemish Eye Splice

In the standard flemish eye mechanical splice rope is separated into two parts—3 adjacent strands, and 3 adjacent strands and core. These two parts then re-laid back in opposite directions to form an eye, and ends are secured with a pressed metal sleeve.



Swaging Provides Positive Grip

This cutaway of a metal sleeve swaged onto a splice shows how metal "flows" into valleys between strands to positively prevent ends from unlaying when sling is used within its rated capacity.



Rope Dia.	RATED CAPACITY - Tons*						Eye Dimensions		Thimble		Alloy Eye Hoist Hook			
	Vert.	*** Choker Hitch	Basket Hitch			A	B	A	B	WLL** Tons	E	R		
			U	30°	45°								60°	
6x19 IWRC	1/4	0.65	0.48	1.3	1.1	0.91	0.65	2	4	7/8	1 5/8	1	.90	3.34
	5/16	1.0	0.74	2.0	1.7	1.4	1.0	2 1/2	5	1 1/16	1 7/8	1	.90	3.34
	3/8	1.4	1.1	2.9	2.5	2.0	1.4	3	6	1 1/8	2 1/8	1.5	.93	3.81
	7/16	1.9	1.4	3.9	3.4	2.7	1.9	3 1/2	7	1 1/4	2 1/4	2	1	4.14
	1/2	2.5	1.9	5.1	4.4	3.6	2.5	4	8	1 1/2	2 3/4	3	1.13	4.69
	9/16	3.2	2.4	6.4	5.5	4.5	3.2	4 1/2	9	1 1/2	2 3/4	5	1.47	5.77
	5/8	3.9	2.9	7.8	6.8	5.5	3.9	5	10	1 3/4	3 1/4	5	1.47	5.77
	3/4	5.6	4.1	11	9.7	7.9	5.6	6	12	2	3 3/4	7	1.75	7.37
7/8	7.6	5.6	15	13	11	7.6	7	14	2 1/4	4 1/4	11	2.29	9.07	
6x37 IWRC	1	9.8	7.2	20	17	14	9.8	8	16	2 1/2	4 1/2	11	2.29	9.07
	1 1/8	12	9.1	24	21	17	12	9	18	2 7/8	5 1/8	15	2.50	10.08
	1 1/4	15	11	30	26	21	15	10	20	2 7/8	5 1/8	15	2.50	10.08
	1 3/8	18	13	36	31	25	18	11	22	3 1/2	6 1/4	22	3.3	12.53
	1 1/2	21	16	42	37	30	21	12	24	3 1/2	6 1/4	22	3.3	12.53
	1 5/8	24	18	49	42	35	24	13	26	4	8	30	4	14.06
	1 3/4	28	21	57	49	40	28	14	28	4 1/2	9	30	4	14.06
	2	37	28	73	63	52	37	16	32	6	12	37	4.25	18.19
	2 1/4	44	35	89	77	63	44	18	36	7	14	45	4.75	20.12
	2 1/2	54	42	109	94	77	54	20	40	-	-	60	5.75	23.72
	2 3/4	65	51	130	113	92	65	22	44	-	-	-	-	-
	3	77	60	153	133	108	77	24	48	-	-	-	-	-
3 1/2	102	79	203	176	144	102	28	56	-	-	-	-	-	
4	130	101	259	224	183	130	32	64	-	-	-	-	-	

