

WARNING

DO NOT EXCEED WORKING LOAD LIMIT.
USE CERTIFIED RIGGING WITH RIGHT SIZE OF WIRE ROPE



Safe Lifters

Tel +91 20 66013783 / 84 / 85 / 86
Fax +91 20 26350832
Email : safelifters@eth.net

Open Spelter Socket



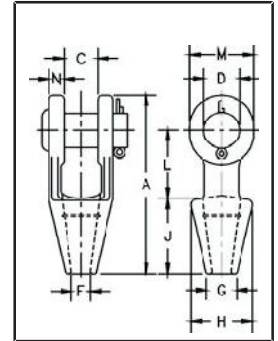
SL-416

Open Grooved Sockets meet the performance requirements of Federal Specification RR-S-550D, Type A, except for those provisions required of the contractor.

Rope Dia. (mm)	Structural Strand Dia. (mm)		Weight Each (kg)	Dimensions (mm)										
				A	C	D	F	G	H	J	L	M	N	
6-7	-		.50	116	19.1	17.5	9.65	17.5	39.6	57.0	39.6	33.3	9.10	
8-10	-		.59	123	20.6	20.6	12.7	20.6	42.9	57.0	44.5	38.1	11.2	
11-13	-		1.02	141	25.4	25.4	14.2	23.9	47.8	63.5	51.0	47.8	12.7	
14-16	12-13		1.63	171	31.8	30.2	17.5	28.7	57.0	76.0	63.5	57.0	14.2	
18	14-16		2.64	202	38.1	35.1	20.6	31.8	66.5	89.0	76.0	66.5	15.7	
20-22	18-19		4.38	235	44.5	41.4	23.9	38.1	82.5	102	89.0	79.5	20.3	
24-26	20-22		7.03	268	51.0	51.0	28.7	44.5	95.5	114	102	95.5	22.4	
28-30	24-26		9.75	300	57.0	57.0	31.8	51.0	105	127	117	105	25.4	
32-35	28		14.1	335	63.5	63.5	38.1	57.0	121	140	127	121	28.7	
38	30-32		21.4	384	76.0	70.0	41.4	70.0	133	152	152	137	30.2	
* 40-42	33-35		24.9	413	76.0	76.0	44.5	76.0	140	165	165	146	33.3	
* 44-48	36-40		37.2	464	89.0	89.0	51.0	79.5	162	191	178	165	39.6	
* 50-54	42-45		59	546	102	95.5	57.0	95.5	187	216	229	178	46.0	
* 56-60	46-48		76	597	114	108	63.5	102	210	229	254	197	54.0	
* 64-67	50-54		114	648	127	121	73.0	114	235	248	274	216	60.5	
* 70-73	56-62		143	692	133	127	79.0	124	267	279	279	229	73.0	
* 75-80	64-67		172	737	146	133	86.0	133	282	305	287	241	76.0	
* 82-86	70-73		197	784	159	140	92.0	146	302	330	300	254	79.0	
* 88-92	76-80		255	845	171	152	98.5	165	314	356	318	274	82.5	
* 94-102	-		355	921	191	178	108	184	346	381	343	318	89.0	

* Cast Alloy Steel.

Specifications given are indicative and are subject to change.



Closed Spelter Socket



SL-417

Closed grooved Sockets meet the performance requirements of Federal Specification RR-S-550D, Type B, except for those provisions required of the contractor.

Rope Dia. (mm) †	Structural Strand Dia. (mm)		Weight Each (kg)	Dimensions (mm)										
				A	B	C	D*	F	G	H	J	K	L	
6-7	-		.23	116	12.7	39.6	22.4	9.65	17.5	39.6	57.2	12.7	46.0	
8-10	-		.34	125	15.8	42.9	24.6	12.7	20.6	42.9	57.2	17.5	52.5	
11-13	-		.68	140	17.5	51.0	29.5	14.2	23.9	51.0	63.5	22.4	58.5	
14-16	12-13		1.13	162	20.6	67.0	35.8	17.5	30.2	67.0	76.2	25.4	60.6	
18	14-16		1.92	194	26.9	76.2	42.2	20.6	33.3	70.0	89.0	31.8	77.5	
20-22	18-19		3.28	226	33.3	92.0	48.7	24.6	38.1	82.5	102	38.1	90.5	
24-26	20-22		4.76	254	36.6	105	58.5	28.7	44.5	95.5	114	44.5	103	
28-30	24-26		6.46	283	39.6	114	65.0	31.8	51.0	105	127	51.0	116	
32-35	28		8.95	309	41.4	128	71.0	38.1	58.5	119	138	56.5	129	
38	30-32		13.24	355	49.3	137	81.0	41.4	70.5	132	151	62.5	155	
† 40-42	33-35		16.32	390	54.0	146	82.5	44.5	76.2	140	165	70.0	171	
† 44-48	36-40		25.96	445	55.5	171	95.5	51.0	79.5	162	191	76.2	198	
† 50-54	42-45		35.83	502	62.0	194	111	57.2	95.5	187	216	82.5	224	
† 56-60	46-48		47.62	556	73.0	216	127	63.5	102	210	229	92.0	254	
† 64-67	50-54		63.50	597	79.5	241	140	74.5	114	235	248	102	270	
† 70-73	56-62		99.79	645	79.5	273	159	79.5	124	259	279	124	286	
† 75-80	64-67		125	686	82.5	292	171	86.0	133	292	305	133	298	
† 82-86	70-73		142	743	102	311	184	92.0	146	311	330	146	311	
† 88-92	76-80		181	787	102	330	197	98.5	165	330	356	159	330	
† 94-102	-		246	845	108	362	216	108	184	362	381	178	356	

† Cast Alloy Steel.

Specifications given are indicative and are subject to change.

