



**WARNING**

DO NOT EXCEED WORKING LOAD LIMIT.  
USE CERTIFIED RIGGING WITH RIGHT SIZE OF WIRE ROPE



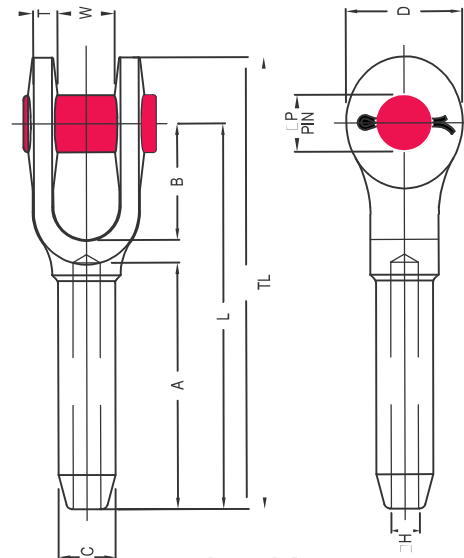
## Open Swage Socket

for wire $\phi$		Dimensions (mm)										Weight (kgs)
(mm)	(inch)	$\phi C$	$\phi H$	$\phi P$	B	TL	A	L	T	W	D	
6	1/4	12.7	6.85	17.5	38	121	54	102	8	17	35	0.25
8	5/16	19.6	8.65	20.6	44	159	81	135	10	21	41	0.5
10	3/8	19.6	10.4	20.6	44	159	81	135	10	21	41	0.5
11	7/16	24.9	12.2	25.4	51	198	108	169	13	25	51	1.1
13	1/2	24.9	14	25.4	51	198	108	169	13	25	51	1.1
14	9/16	31.8	15.5	30.2	57	243	135	206	16	32	63	2.1
16	5/8	31.8	17	30.2	57	243	135	206	16	32	63	2.1
19	3/4	39.4	20.3	35.1	70	297	162	254	19	38	76	3.6
22	7/8	43.2	23.9	41.1	83	346	189	295	23	44	86	5.3
25	1	50.5	26.9	51	95	397	216	340	26	51	102	8.1
29	1 1/8	57	30.2	57	108	444	243	381	30	57	114	13.5
32	1 1/4	64.5	33.8	63.5	121	494	270	419	30	63	127	16.4
35	1 3/8	71	36.8	63.5	133	540	297	460	33	63	133	21.4
38	1 1/2	78	40.1	70	146	591	324	502	37	76	146	29.5
44	1 3/4	86	47.2	89	171	689	378	584	43	89	178	42.2
51	2	100	53.5	95.5	203	798	432	679	46	102	203	65.8
57	2 1/4	113	59.9	108	171	835	486	705	65	114	222	93.5
63	2 1/2	125.2	67.5	108	171	879	498	749	65	114	222	103
76	3	150.6	80.4	133.4	219	1045	603	905	76	146	241	181.5

Swage sockets are recommended for use on 6x19 or 6x37 IWRC regular lay ropes and also satisfactory on galvanized bridge rope. They are **not recommended** for use on fiber core ropes.

Before using swage sockets with other type lay, construction or grade of wire rope, it is recommended that the termination be proofloaded to prove the adequacy of the assembly.

Sockets properly applied have an efficiency rating of 100% based on the catalog strength of the used wire rope.



**SL-501**

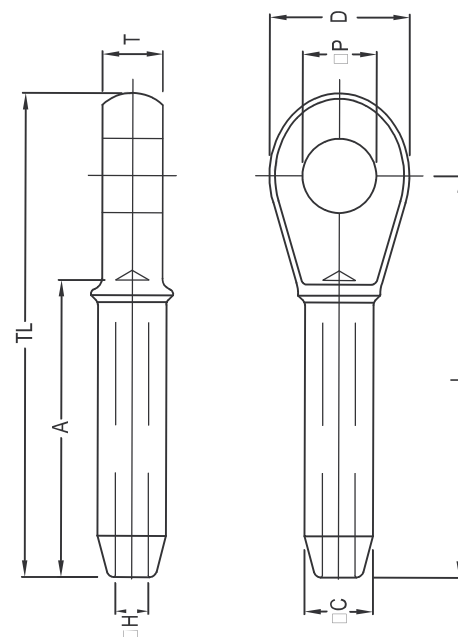
## Closed Swage Socket

for wire $\phi$		Dimensions (mm)								Weight (kgs)
(mm)	(inch)	$\phi C$	$\phi H$	D	$\phi P$	T	A	TL	L	
6	1/4	12.7	6.85	37	19.1	13	54	111	89	0.15
8	5/16	19.6	8.65	43	22.4	17	81	140	114	0.36
10	3/8	19.6	10.4	43	22.4	17	81	140	114	0.35
11	7/16	24.9	12.2	51	26.9	22	108	176	146	0.7
13	1/2	24.9	14	51	26.9	22	108	176	146	0.7
14	9/16	31.8	15.5	63	31.8	29	135	222	184	1.3
16	5/8	31.8	17	63	31.8	29	135	222	184	1.3
19	3/4	39.4	20.3	76	36.6	33	162	264	219	2.3
22	7/8	43.2	23.9	89	42.9	38	189	308	257	3.4
25	1	50.5	26.9	102	52.5	44	216	349	292	5.1
29	1 1/8	57	30.2	114	58.5	51	243	387	324	7.2
32	1 1/4	64.5	33.8	127	65	57	270	438	365	10.5
35	1 3/8	71	36.8	133	65	57	297	479	400	14.1
38	1 1/2	78	40.1	140	71.5	63	324	518	432	17.7
44	1 3/4	86	47.2	171	90.5	76	378	610	508	23.6
51	2	100	53.5	197	96.5	83	432	698	584	40.8
57	2 1/4	113	59.9	219	109.5	102	486	756	632	55.4
63	2 1/2	125.2	67.5	219	109.5	102	498	791	667	64.4
76	3	150.6	80.4	235	134.9	137	603	959	816	114.3

Swage sockets are recommended for use on 6x19 or 6x37 IWRC regular lay ropes and also satisfactory on galvanized bridge rope. They are **not recommended** for use on fiber core ropes.

Before using swage sockets with other type lay, construction or grade of wire rope, it is recommended that the termination be proofloaded to prove the adequacy of the assembly.

Sockets properly applied have an efficiency rating of 100% based on the catalog strength of the used wire rope.



**SL-502**