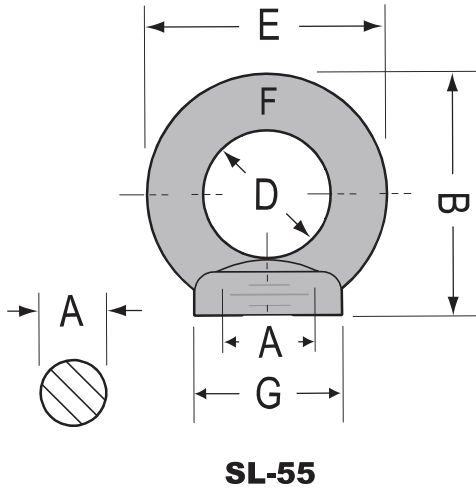


**WARNING**  
 DO NOT EXCEED WORKING LOAD LIMIT.  
 USE SWIVEL EYE BOLT & HOIST RING FOR ANGLE LIFTING.

## Eye Nut

### DIN 582



### C15 Steel Forged Eye Nut With Collar

Dimen. A	WLL t	B mm	D mm	E mm	F mm	G mm	Weight kg / 100 pcs
M 6	0,07	34	20	36	7	20	4
M 8	0,14	36	20	36	8	20	5
M10	0,23	45	25	45	10	25	9
M12	0,34	54	30	53	12	30	16
M14	0,49	63	35	60	13	35	23
M16	0,70	63	35	62	14	35	24
M20	1,20	72	40	71	16	40	35
M24	1,80	90	50	90	20	50	70
M30	3,60	109	60	109	24	65	132
M36	5,10	128	70	128	28	75	208
M42	7,00	147	80	147	32	85	311
M48	8,60	168	90	168	38	100	502
M56	11,50	187	100	187	42	110	669
M64	16,00	208	110	208	48	120	930

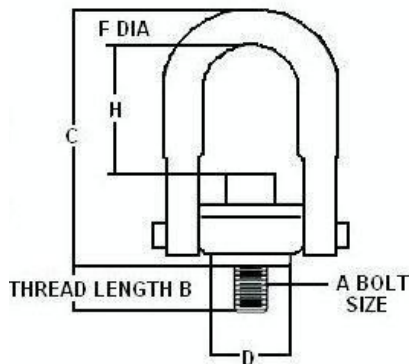
Specifications given are indicative and are subject to change.

All dimensions in mm

Proof Load = 2 x S.W.L. (Safe Working Load)

## Swivel Hoist Ring

### Features



The Swivel Hoist Ring is a revolutionary design which replaces the traditional eye bolt used for lifting Dies and Moulds.

The Hoist Ring has a 360 Degree Swivel Movement and 180 Pivot Movement.

Lifting Moulds and Dies from any angle is possible only with the Swivel Hoist Ring

The Hoist Ring is manufactured from EN-8 Steel and is hardened and tempered with high tensile Bolts.

The Swl and Size is marked on the Hoist Ring with Identification number for easy identification.

### SPECIFICATIONS

Item Code	Size mm	Swl Ton	Bolt mm	B mm	C mm	D mm	F mm	H mm
SL125-M12	M-12	0.6	12	40	100	50	16	45
SL125-M16	M-16	1.3	16	50	110	50	18	52
SL125-M20	M-20	2.0	20	56	132	70	20	60
SL125-M24	M-24	3.5	24	70	156	70	22	70
SL125-M30	M-30	5.0	30	80	188	75	25	90
SL125-M36	M-36	8.0	36	95	258	95	30	140

Specifications given are indicative and are subject to change.